

CERTIFICATE OF LOCATION OF GOVERNMENT CORNER

County of Anoka

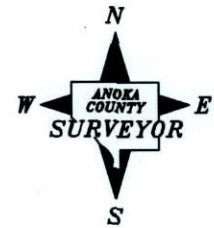
State of Minnesota

Southeast Corner of Sec. 8 Township 32 Range 23

I hereby certify that on the 28th day of December, 1962, I found the described corner which was evidenced by a concrete monument

and I further certify that to perpetuate the location of said corner, I did, at the exact location thereof, place a permanent marker consisting of a 4" square concrete monument with sign and post on the north side

which reference or witness monuments are located in the manner following:



NEW (UP 5')
Nail and washer
14" Oak
16"

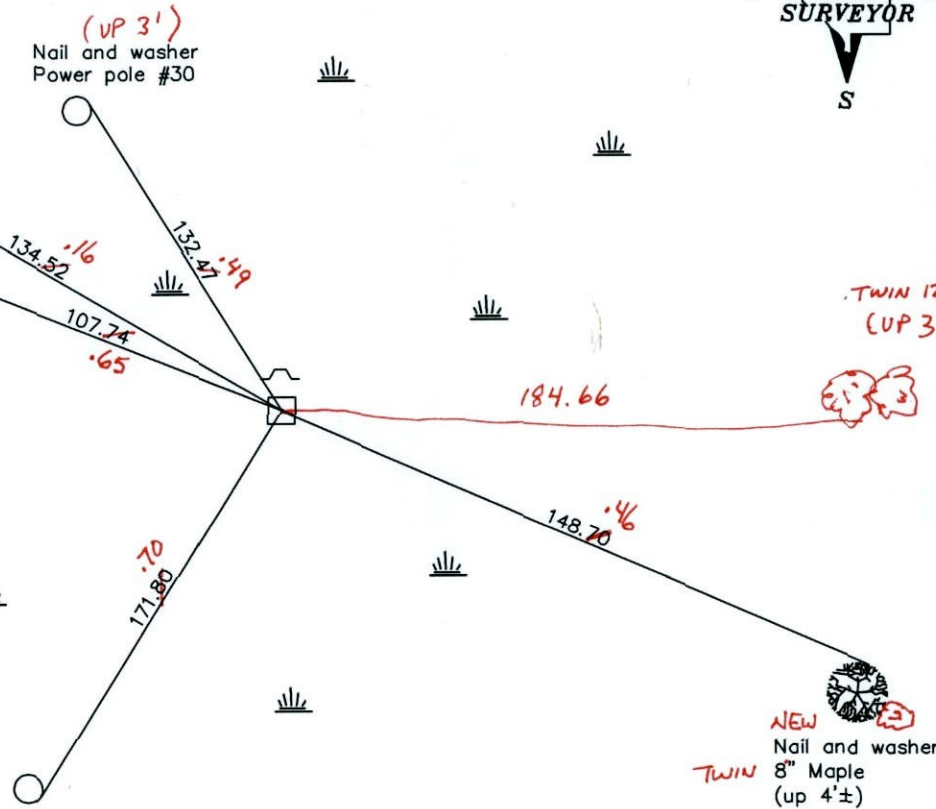
(UP 3')
Nail and washer
Power pole #30

NEW (UP 2')
Nail and washer
10" Maple
12"

TWIN 12" BIRCH (UP 3')

(UP 3')
Nail and washer
Power pole #31

NEW TWIN 8" Maple (up 4'±)



3-14-11

BK - SS

T/T

Revised date

| |
|----------|
| 1/06/93 |
| wet 1996 |
| 1/30/02 |
| |
| |

N.A.D. 1983 Coordinates
(1996 adjustment)

| County Project Coordinates | State Plane Coordinates |
|-----------------------------|-------------------------|
| Northing <u>185581.6487</u> | Y _____ |
| Easting <u>510840.8293</u> | X _____ |

Date 1/30/02

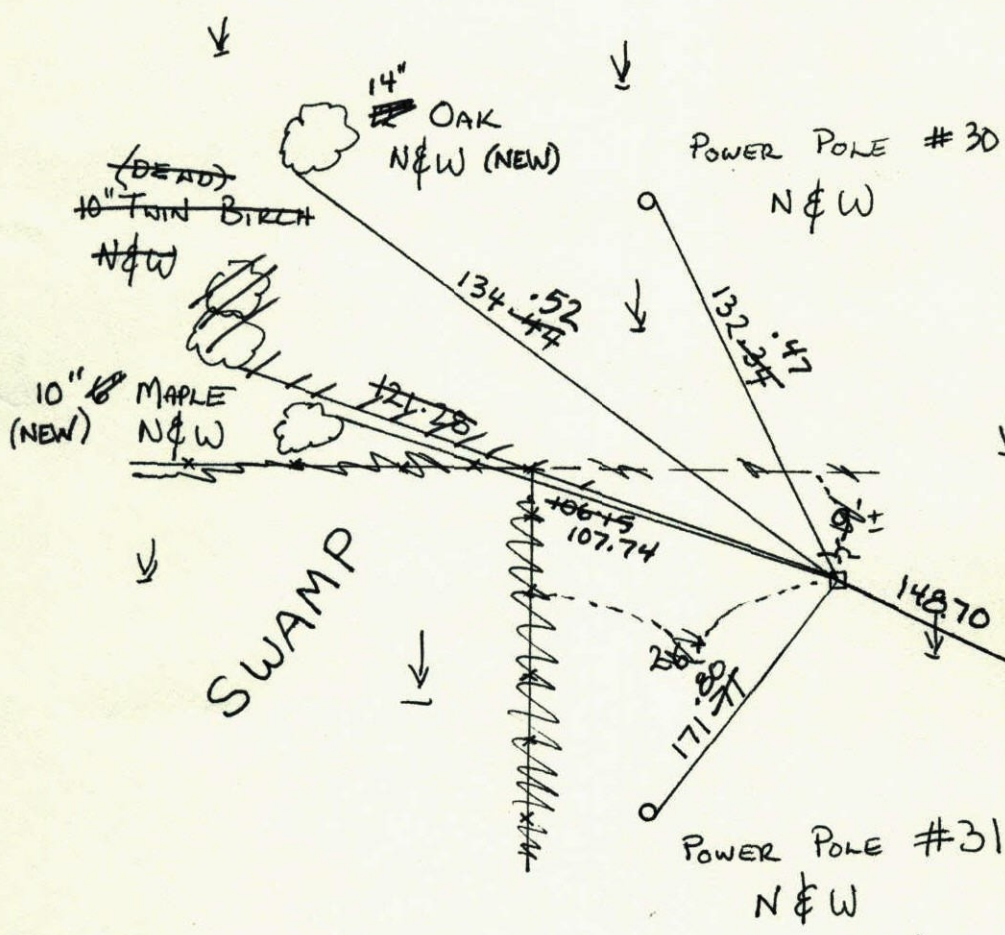
CERTIFICATE OF LOCATION OF GOVERNMENT CORNER

County of Anoka State of Minnesota

SOUTHEAST Corner of Sec. 8 Township 32 Range 23

I hereby certify that on the 28 day of DECEMBER, 1962, I found the described corner which was evidenced by CONCRETE

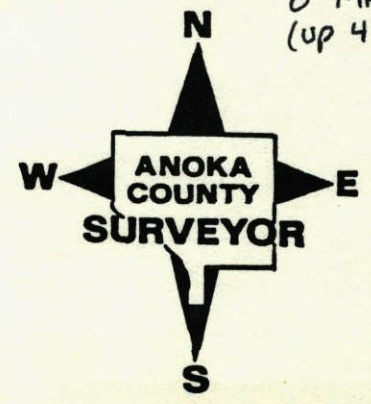
and I further certify that to perpetuate the location of said corner, I did, at the exact location thereof, place a permanent marker consisting of 4" SQUARE CONCRETE MONUMENT SIGN AND POST ON NORTH SIDE which reference or witness monuments are located in the manner following:



| | | |
|--------------------------|---------|--------------------|
| N.A.D. | 1983 | Co-ordinates |
| County | Project | Co-ordinates |
| Northing | | <u>185581.6487</u> |
| Easting | | <u>510840.8293</u> |
| State Plane Co-ordinates | | |
| Y | | _____ |
| X | | _____ |
| Date | | _____ |

NAIL & WASHER
8" MAPLE
(up 4')

| Revised date | Revised date | Revised date |
|--------------|--------------|--------------|
| 1-2-91 | | |
| 1-6-93 WL | | |
| WET 1996 | | |
| 1-30-02 | | |
| | | |
| | | |
| | | |

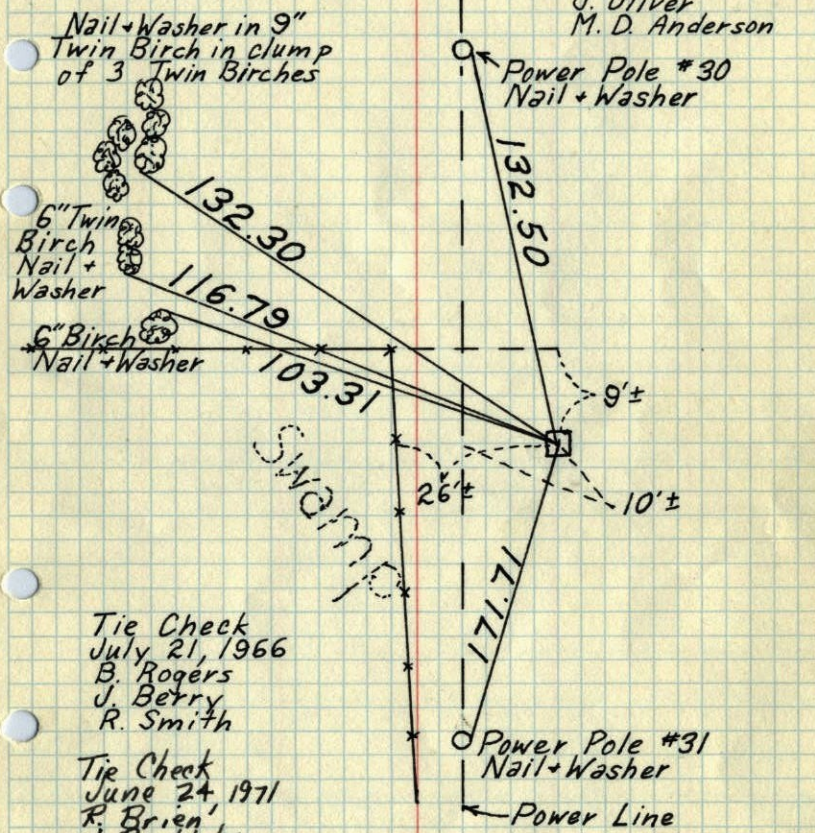


55

SE Cor. Sec. 8-T32-R23

Found 4" Square Concrete Monument
7' tall 2x2 on South Side

December 28, 1962

J. Oliver
M. D. Anderson

Tie Check
July 21, 1966
B. Rogers
J. Berry
R. Smith

Tie Check
June 24, 1971
R. Brien
J. Boattoher
B. Olson

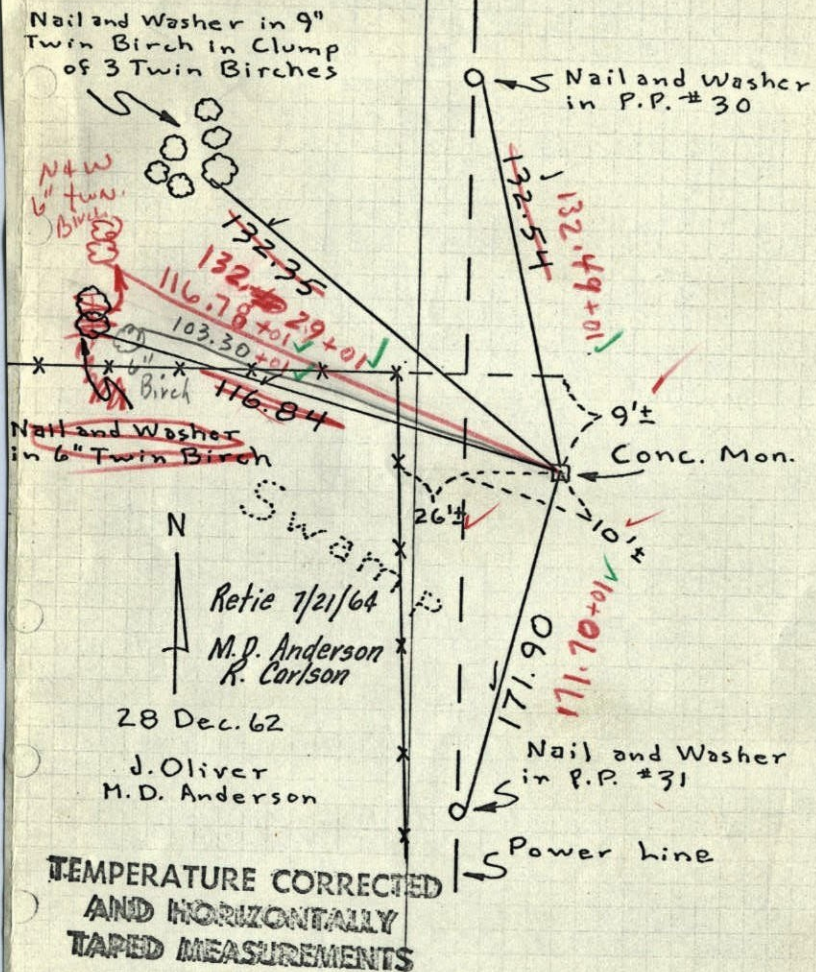
TEMPERATURE CORRECTED
AND HORIZONTALLY
TAPED MEASUREMENTS

ROLAND W. ANDERSON
COUNTY SURVEYOR
ANOKA COUNTY, MINNESOTA

38
50

SE Cor. Sec. 8, T32, R23

Found 4" Sq. Concrete Monument. 7' tall
2x2 on South Side.



28 Dec. 62

J. Oliver
M. D. Anderson

TEMPERATURE CORRECTED
AND HORIZONTALLY
TAPED MEASUREMENTS

ROLAND W. ANDERSON
COUNTY SURVEYOR
ANOKA COUNTY, MINNESOTA

ties checked

7/21/66

B. Rogers

J. Berry

R. Smith

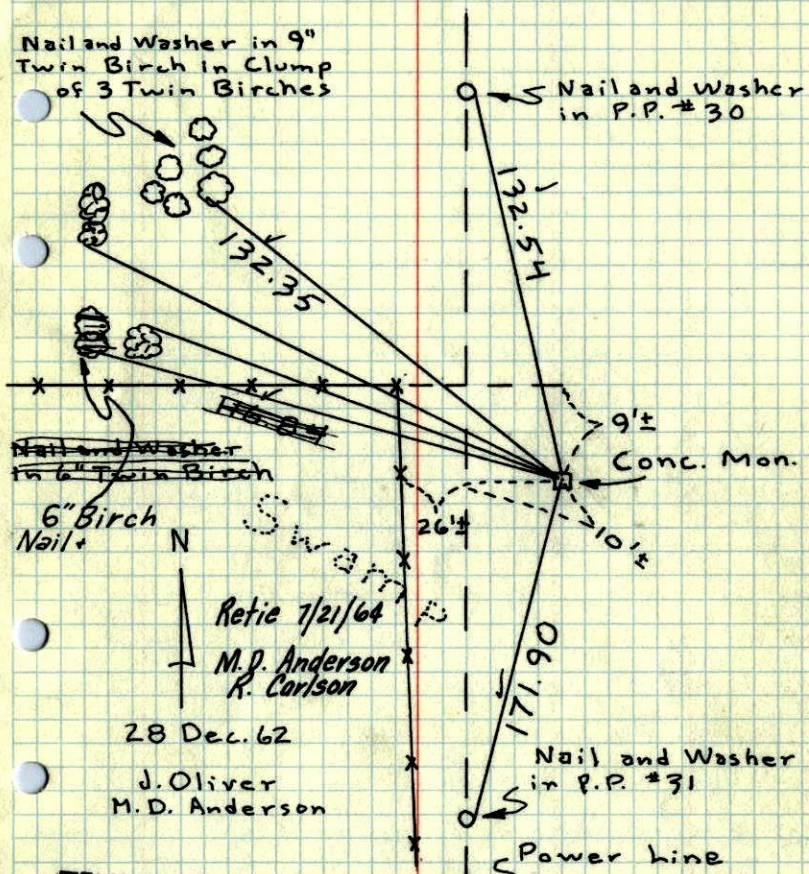
temp. 79° ✓

tape #5 ✓

SE Cor. Sec. 8, T32, R23

Found 4" Sq. Concrete Monument. 7' tall

2x2 on South Side.

Nail and Washer in 9"
Twin Birch in Clump
of 3 Twin Birches

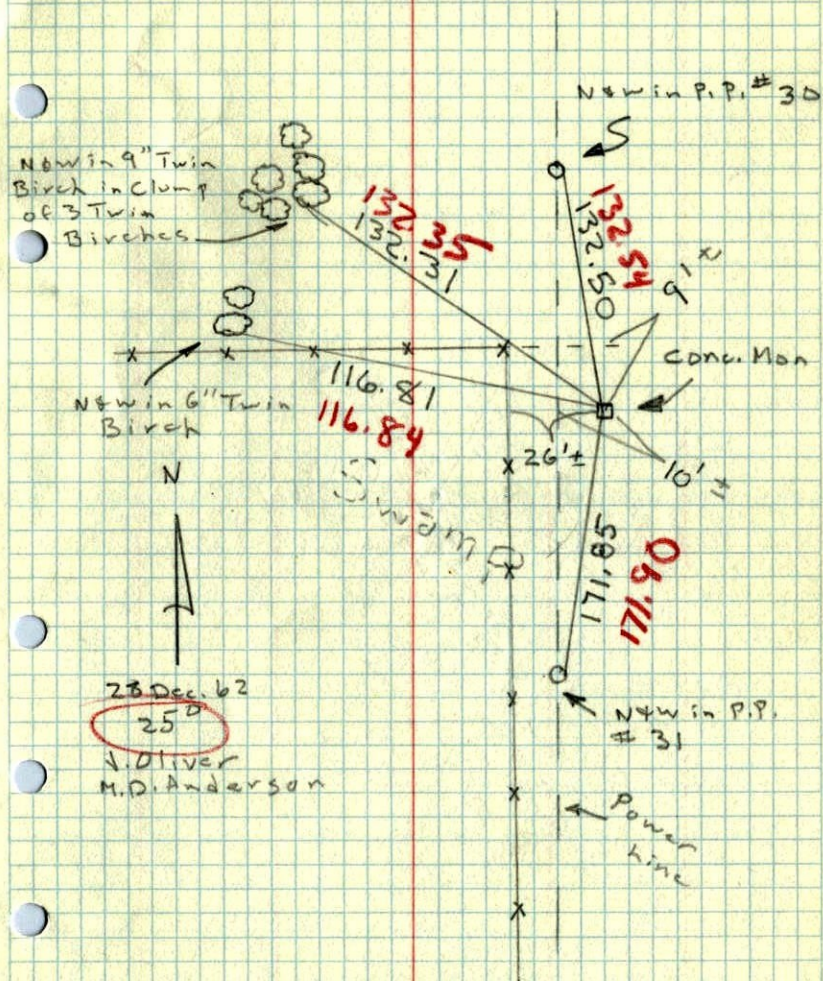
TEMPERATURE CORRECTED
AND HORIZONTALLY
TAPED MEASUREMENTS

ROLAND W. ANDERSON
COUNTY SURVEYOR
ANOKA COUNTY, MINNESOTA

SE Cor. Sec. 8, T32, R23

Found 4" Sq. Conc. Mon. 7' Tall 2x2

on South Side.



In Swamp winter job?

NW Sec 16 T32 R23

Conc. Mon. Up 0.3'
Var 8°30' Ham Lake

11/29/48

